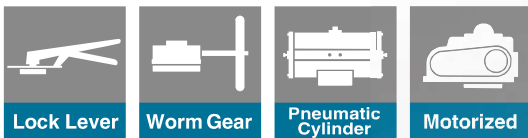
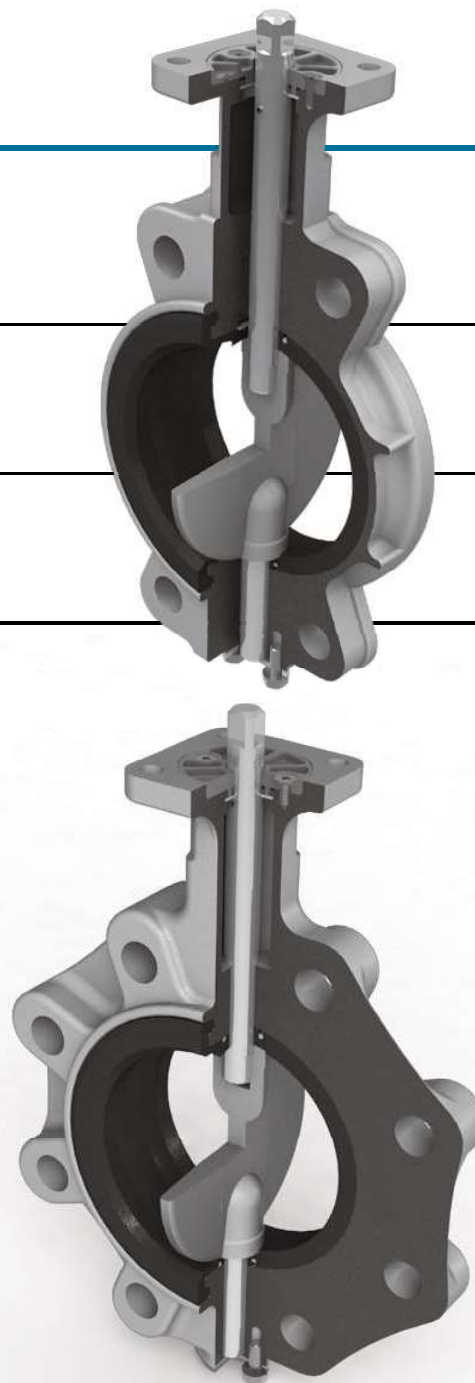


72WG Wafer

72SG Semi lugged

72LG Full lugged



Features and Benefits

New cosine-curve seat

The new cosine-curve seat (patent pending) allows better performance in reducing friction, torque and wear than the previous design.

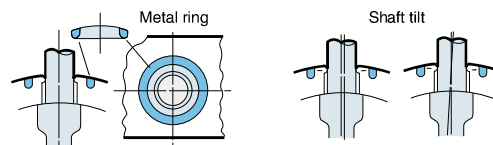
Much longer life with spherical design

Similar to a spherical body rotating inside a spherical area, the operation of the disc is smooth and unhindered. Torque is reduced and the valve life is lengthened.



Self-aligning stem seal through backup ring

The stem seal is the primary and secondary seal system. The backup ring functions as the self-aligning stem seal.



Ease of maintenance

The field replaceable seat ring makes maintenance easy and reduces maintenance costs.

Standard Specifications

Model	72WG (Wafer)	72SG (Semi lugged)	72LG (Lugged)
Valve nominal size	40 to 200mm	50 to 600mm	50 to 600mm
Applicable flange standard	DIN PN16, GB PN16, ANSI 150Lb, BS4504 PN16	DIN PN16, GB PN16, ANSI 150Lb, BS4504 PN16	DIN PN16, GB PN16, ANSI 150Lb, BS4504 PN16
Face-to-face dimensions	JIS B 2002 / ISO 5752 / API 609		
Max. working pressure	1.6Mpa		
Body shell test (hydraulic)	2.4Mpa		
Seat leak test (pneumatic)	1.76Mpa		
Working temperature range ※1	NBR : -10 to 80 degrees C, *EPDM : -20 to 120 degrees C		
Working temperature in continuous use ※2	NBR : 0 to 60 degrees C, *EPDM : 0 to 70 degrees C		
Standard materials	Body	Ductile iron, JIS FCD450	
	Disc	304 stainless steel, JIS SCS13	
	Stem	316 stainless steel, JIS SCS14	
	Seat ring	SUS420J2	
Actuators	Lock lever	Manual, pneumatic, electric	
Coating ※8	Powder coat paint (Munsell N7)		

※1 Please consult us when using NBR and EPDM seating continuously above 60 degrees C and 70 degrees C respectively.

※2 "Working temperature in continuous use" stands for the temperature continuously kept exceeding one hour.

* Never use an EPDM rubber seat ring if the valve is being used for oil or for a fluid containing even a slight amount of oil.

Butterfly Valve

TRITEC

TT2

334A

344Q

302A/303Q

304A/304Q

304YA

302Y/304Y

304M (HLV)

507V/508V

DTM

846T/847T/847Q

841T/842T

700Z

700G/704G/705G

72WG/72SG/72LG

731P/732P/732Q/752W

700E/700K/700S

704G/722F/720F

KRV

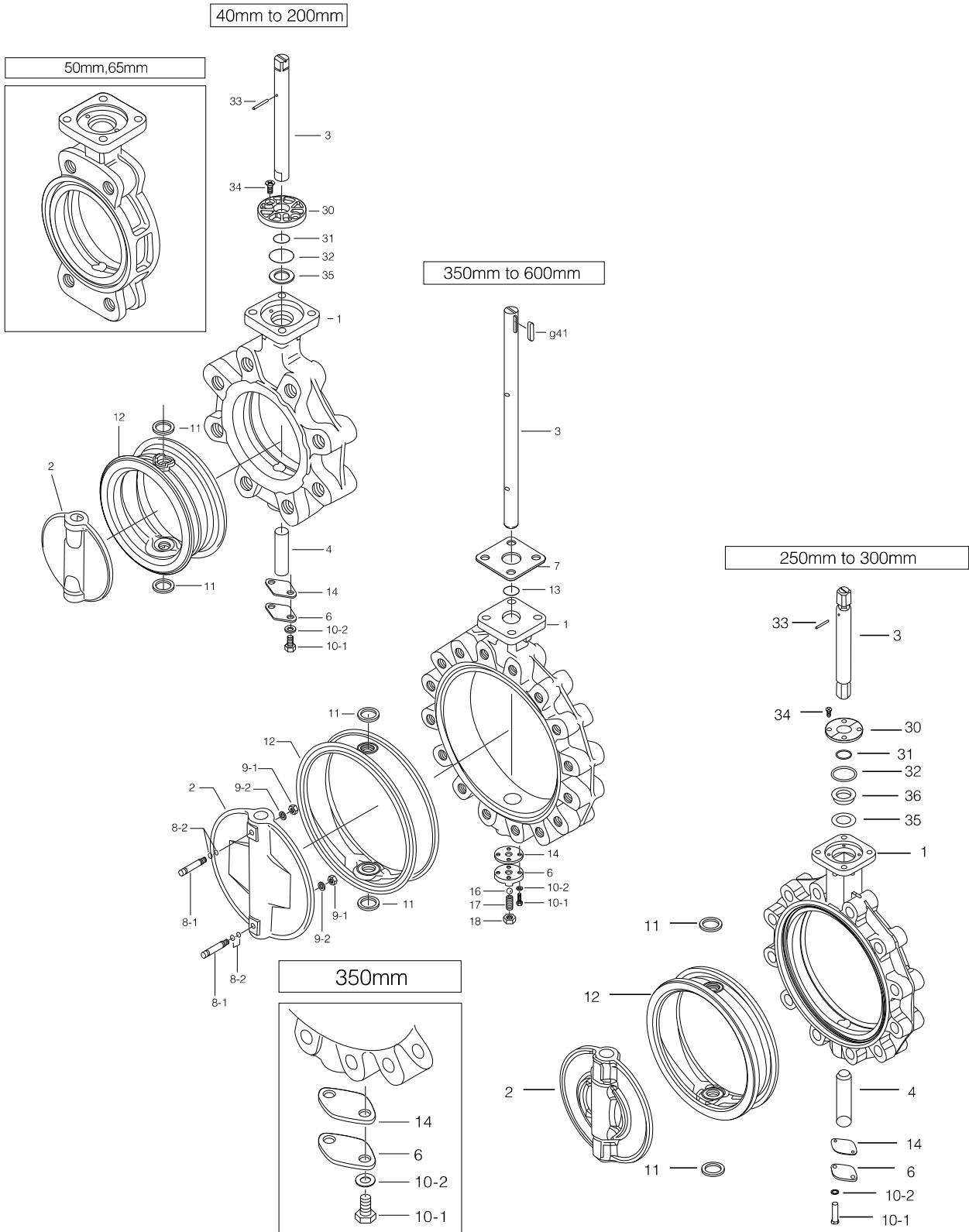
227P

907H/908H (MKT)

903C

72WG (Wafer) / 72SG (Semi lugged) / 72LG (Lugged)

72WG / 72SG / 72LG Expanded view of components



※The drawing above is 72LG series.
The components of 72WG and 72SG series are the same.

72WG/72SG/72LG Parts list

■72WG/72SG/72LG Parts list (40mm to 300mm)

No.	Description	Q'ty	Remarks
1	Body	1	
2	Disc	1	
3	Upper stem	1	
4	Lower stem	1	
6	Bottom cover	1	
10-1	Hexagon bolt	2	
10-2	Spring washer	2	
★ 11	Secondary ring	2	Only 50mm to 300mm
★ 12	Seat ring	1	
★ 14	Gasket	1	
★ 30	Bushing	1	
★ 31	O-ring	1	
★ 32	O-ring	1	
33	Spring pin	1	
34	Machine screw	2	
35	Plate	1	
36	Seal seat	1	Only 250mm to 300mm

■72WG/72SG/72LG Parts list (350mm to 600mm)

No.	Description	Q'ty	Remarks
1	Body	1	
2	Disc	1	
3	Stem	1	
6	Bottom cover	1	
7	Retainer plate	1	
★ 8-1	Taper bolt	2	
★ 8-2	O-ring	4	
★ 9-1	Hexagon nut	2	
★ 9-2	Spring washer	2	
10-1	Hexagon bolt	2	350mm
		4	400mm to 600mm
10-2	Spring washer	2	350mm
		4	400mm to 600mm
★ 11	Secondary ring	2	350mm
11	Secondary ring	2	400mm to 600mm
★ 12	Seat ring	1	
★ 13	O-ring	1	
★ 14	Gasket	1	
16	Ball	1	Only 400mm to 600mm
17	Hollow bolt	1	Only 400mm to 600mm
18	Lock nut	1	Only 400mm to 600mm
g41	Key	1	

Remark 1: The ★ indicates recommended spare parts. They are supplied as "Seat ring set".

Butterfly Valve

TRITEC

TT2

334A

344Q

302A/303Q

304A/304Q

304YA

302Y/304Y

304M
(HLV)

507V/508V

DTM

846T/847T/847Q

841T/842T

700Z

700G/704G/705G

72WG/72SG/72LG

731P/732P/
732Q/752W

700E/700K/700S

704G/722F/720F

KRV

227P

907H/908H
(MKT)

903C

72WG Actuator Selection Chart

72WG

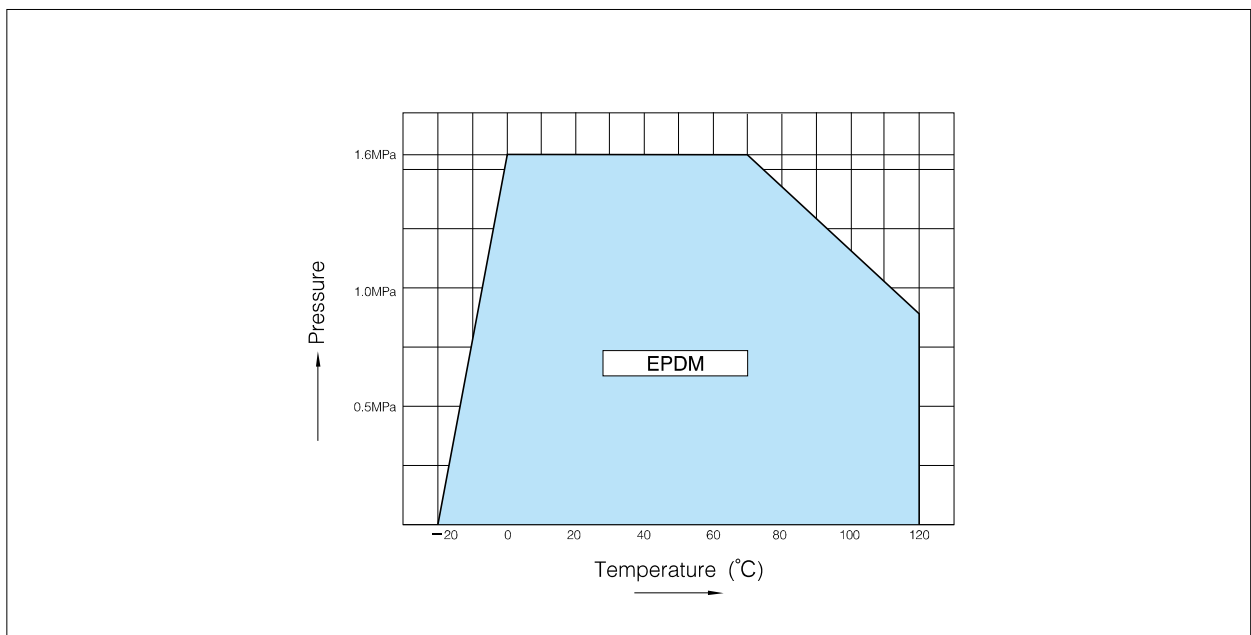
Model	Category	Size (mm / inch)														
		40	50	65	80	100	125	150	200	250	300	350	400	450	500	600
		1 1/2	2	2 1/2	3	4	5	6	8	10	12	14	16	18	20	24
1T	Standard	1T-1			1T-2			1T-3								
	Heavy duty															
2U	Standard	2U-0		2U-1		2U-2		2U-3		2U-4		2U-5		2U-6		
	Heavy duty															
7E,3A	Standard	T35		T85		T200		T380		T750		TGA-140		TGA-180		
	Heavy duty															
7G,7F 3U,3K	Standard	T85S		T200S		T380S		T750S		TG-12S		TG-14S		TG-20S		
	Heavy duty															
4I*	ON-OFF	4I-00		4I-0		4I-1		4I-2		4I-2.5		4I-3		4I-4		
	Control															

Remark*: For 350mm with the accessories below, type 4I-4 should be selected.

- Micom unit
- Servo unit
- Speed control unit
- Potentiometer

Selection criteria	Standard	Select when none of the following heavy duty items apply.
	Heavy duty	Select when any of the following items apply. ① Powder or high viscosity fluid (crude oil, etc.) ② Control specification (with positioner) ③ Emergency open valve or pipe dead end valve

72WG / 72SG / 72LG Pressure-Temperature Rating



72SG / 72LG Actuator Selection Chart

72SG / 72LG

Model	Category	Size (mm / inch)													
		50	65	80	100	125	150	200	250	300	350	400	450	500	600
		2	2 1/2	3	4	5	6	8	10	12	14	16	18	20	24
1T	Standard	1T-1			1T-2			1T-3							
	Heavy duty														
2U	Standard	2U-0	2U-1	2U-2	2U-3	2U-4	2U-5	2U-6							
	Heavy duty														
7E, 3A	Standard	T35	T85	T200		T380	T750	TGA-140	TGA-180						
	Heavy duty														
7G, 7F 3U, 3K	Standard	T85S	T380S		T750S	TG-12S	TG-20S								
	Heavy duty														
4I*	ON-OFF	4I-00	4I-0	4I-1	4I-2	4I-2.5	4I-3	4I-4							
	Control														

Remark*: For 350mm with the accessories below, type 4I-4 should be selected.

- Micom unit
- Servo unit
- Speed control unit
- Potentiometer

Selection criteria	Standard	Select when none of the following heavy duty items apply.
	Heavy duty	Select when any of the following items apply. ① Powder or high viscosity fluid (crude oil, etc.) ② Control specification (with positioner) ③ Emergency open valve or pipe dead end valve

Butterfly Valve

TRITEC

TT2

334A

344Q

302A/303Q

304A/304Q

304YA

302Y/304Y

304M

(HLV)

507V/508V

DTM

846T/847T/847Q

841T/842T

700Z

700G/704G/705G

72WG/72SG/72LG

**731P/732P/
732Q/752W**

700E/700K/700S

704G/722F/720F

KRV

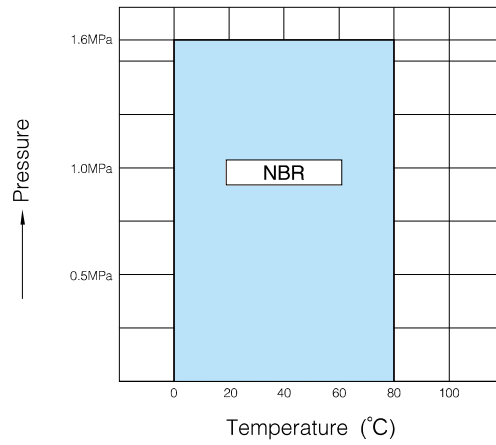
227P

907H/908H

(MKT)

903C

72WG / 72SG / 72LG Pressure-Temperature Rating



72WG (Wafer) / 72SG (Semi lugged) / 72LG (Lugged)

72WG Bare shaft

72WG

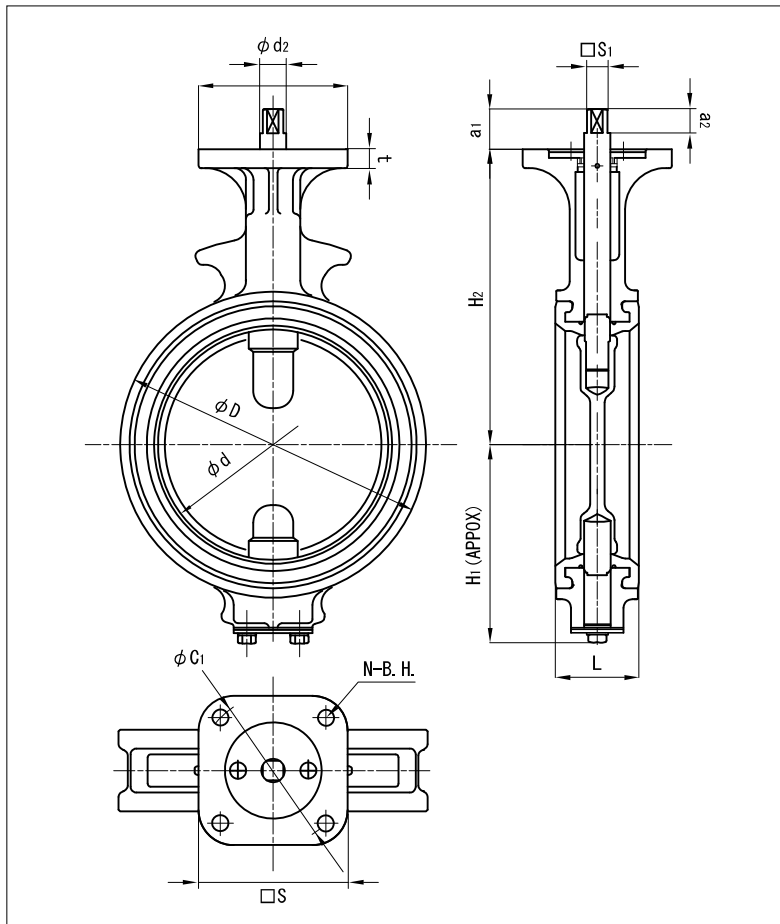
Shaft type	Nominal size		Dimension (mm)													Approx. Mass (kg)
	mm	inch	ϕd	ϕD	L	H ₁	H ₂	a ₁	a ₂	$\square S_1$	ϕd_2	b	t ₂	t	Top flange	
01	40	1 1/2	45	80	35	61	132	21.5	10.5	8	10	—	—	12	F07	1.5
	50	2	56	90	43	68	138	21.5	10.5	8	10	—	—	12	F07	1.8
	65	2 1/2	69	115	46	79	151	21.5	10.5	8	10	—	—	12	F07	2.5
	80	3	84	126	46	86	156	22.5	11.5	10	12	—	—	12	F07	2.6
	100	4	104	146	52	103	167	22.5	11.5	12	14	—	—	12	F07	3.4
	125	5	130	181	56	118	191	27.5	16.5	14	16	—	—	14	F10	5.4
	150	6	153.5	211	56	135	202	27.5	16.5	14	18	—	—	14	F10	7
	200	8	199	256	60	177	227	30	20	18	22	—	—	14	F10	10.4

Top flange dimension list

Flange type	$\square S$	ϕC_1	N	B.H.
F07	70	70	4	9
F10	102	102	4	11
F12	125	125	4	13
F14	140	140	4	19
F16	165	165	4	23

Shaft type	01 : Square
------------	-------------

72WG 40mm~200mm



72S G Bare shaft (01: 50mm to 300mm, 02: 350mm to 600mm)

72SG

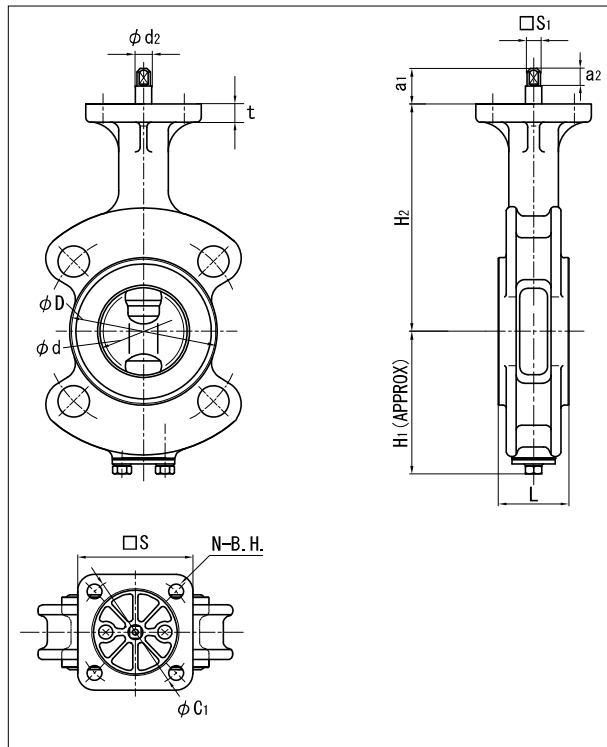
Shaft type	Nominal size		Dimension (mm)													Approx. Mass (kg)
	mm	inch	ϕd	ϕD	L	H ₁	H ₂	a ₁	a ₂	$\square S_1$	ϕd_2	b	t ₂	t	Top flange	
01	50	2	56	90	43	85	138	21.5	10.5	8	10	—	—	12	F07	2.8
	65	2 1/2	69	115	46	94	151	21.5	10.5	8	10	—	—	12	F07	4
	80	3	84	126	46	109	156	22.5	11.5	10	12	—	—	12	F07	4
	100	4	104	146	52	117	167	22.5	11.5	12	14	—	—	12	F07	5
	125	5	130	181	56	143	191	27.5	16.5	14	16	—	—	14	F10	8
	150	6	153.5	211	56	164	202	27.5	16.5	14	18	—	—	14	F10	11
	200	8	199	256	60	186	227	30	20	18	22	—	—	14	F10	15
	250	10	253	322	68	215	280	35	30	24	28	—	—	14	F10	27
	300	12	302	367	78	253	312	35	30	24	32	—	—	16	F12	35
02	350	14	337	410	78	276	348	48	40	—	32	10	3	23	F14	47
	400	16	394	469	102	338	383	54	45	—	40	12	3	23	F14	71.5
	450	18	441	525	114	368	413	65	56	—	46	14	3.5	23	F14	94.5
	500	20	492	580	127	403	453	79	70	—	50	14	3.5	28	F14	126
	600	24	584	682	154	458	528	79	70	—	55	16	4	28	F16	190

Top flange dimension list

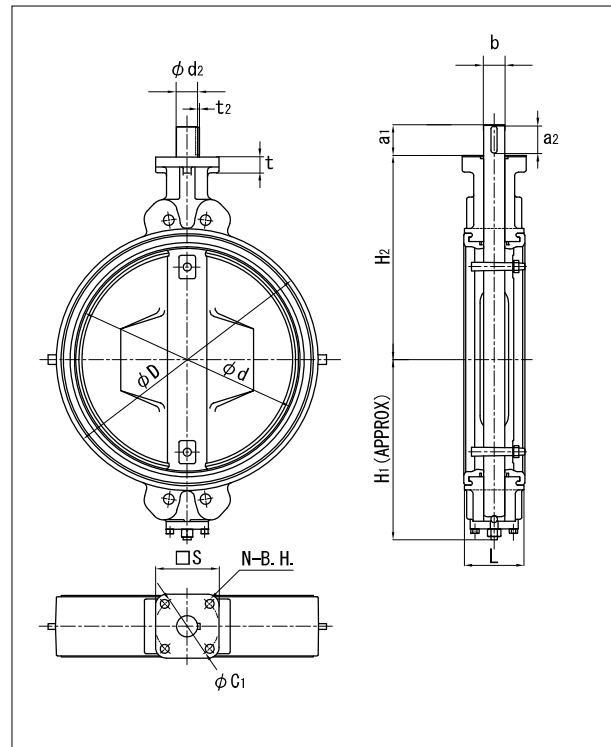
Flange type	$\square S$	ϕC_1	N	B.H.
F07	70	70	4	9
F10	102	102	4	11
F12	125	125	4	13
F14	140	140	4	19
F16	165	165	4	23

Shaft type	
01	Square
02	Round (Key way)

72SG 50mm~300mm



72SG 350mm~600mm



Butterfly Valve

TRITEC

TT2

334A

344Q

302A/303Q

304A/304Q

304YA

302Y/304Y

304M (HLV)

507V/508V

DTM

846T/847T/847Q

841T/842T

700Z

700G/704G/705G

72WG/72SG/72LG

731P/732P/732Q/752W

700E/700K/700S

704G/722F/720F

KRV

227P

907H/908H (MKT)

903C

72LG Bare shaft (01: 40mm to 300mm, 02: 350mm to 600mm)

72LG

Shaft type	Nominal size		Dimension (mm)													Approx. Mass (kg)
	mm	inch	ϕd	ϕD	L	H ₁	H ₂	a ₁	a ₂	$\square S_1$	ϕd_2	b	t ₂	t	Top flange	
01	50	2	56	90	43	85	138	21.5	10.5	8	10	—	—	12	F07	2.8
	65	2 1/2	69	115	46	94	151	21.5	10.5	8	10	—	—	12	F07	4
	80	3	84	190	46	109	156	22.5	11.5	10	12	—	—	12	F07	5.6
	100	4	104	223	52	117	167	22.5	11.5	12	14	—	—	12	F07	7.9
	125	5	130	250	56	143	191	27.5	16.5	14	16	—	—	14	F10	9.8
	150	6	153.5	276	56	164	202	27.5	16.5	14	18	—	—	14	F10	11.5
	200	8	199	334	60	177	227	30	20	18	22	—	—	14	F10	17.5
	250	10	253	402	68	215	280	35	30	24	28	—	—	14	F10	30
02	300	12	302	472	78	253	312	35	30	24	32	—	—	16	F12	43
	350	14	337	$\frac{533}{520}$	78	276	348	48	40	—	32	10	3	23	F14	65
	400	16	394	597	102	338	383	54	45	—	40	12	3	23	F14	106
	450	18	441	$\frac{640}{634}$	114	368	413	65	56	—	46	14	3.5	23	F14	127
	500	20	492	$\frac{730}{696}$	127	403	453	79	70	—	50	14	3.5	28	F14	168
	600	24	584	$\frac{840}{820}$	154	458	528	79	70	—	55	16	4	28	F16	270

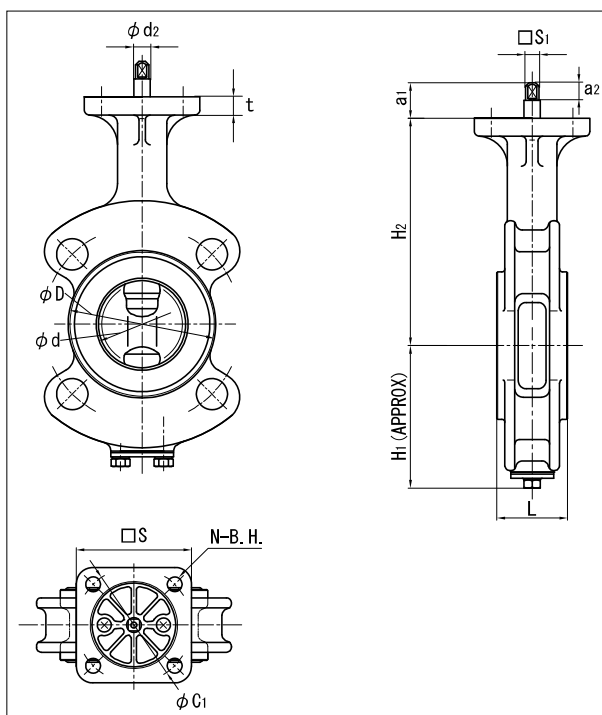
* Upper : DIN PN16 Lower : ANSI 150LB

Top flange dimension list

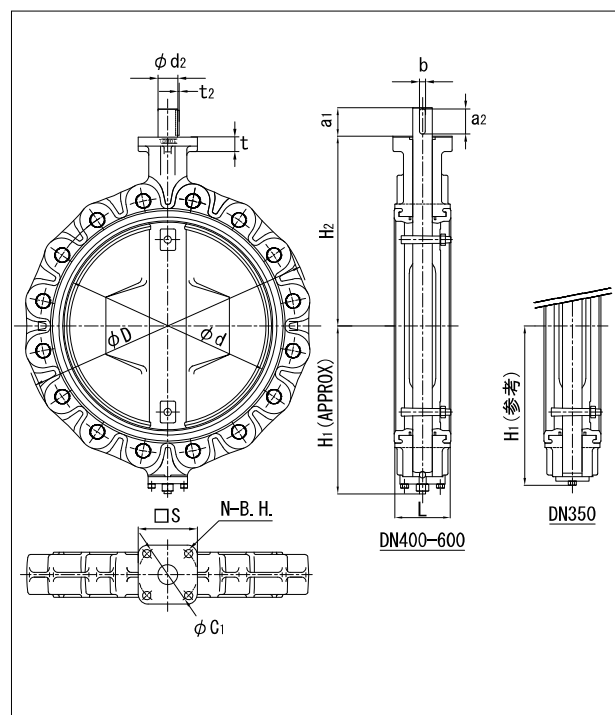
Flange type	$\square S$	ϕC_1	N	B.H.
F07	70	70	4	9
F10	102	102	4	11
F12	125	125	4	13
F14	140	140	4	19
F16	165	165	4	23

Shaft type	01 : Square
	02 : Round (Key way)

72LG 50mm~300mm



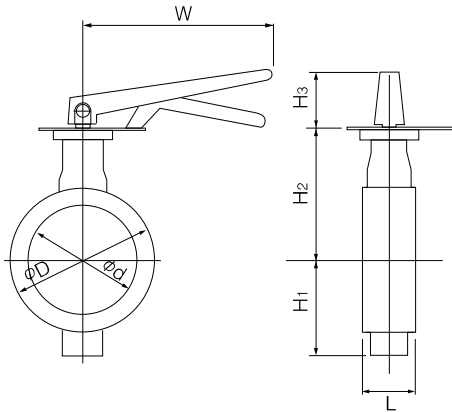
72LG 350mm~600mm



Lock lever type 72WG-1T (40mm to 200mm)

Nominal size		Dimension (mm)							Lever type	Approx. Mass (kg)
mm	inch	ϕd	ϕD	L	H ₁	H ₂	H ₃	W		
40	1 1/2	45	80	35	61	132	66	200	1T-1	2.1
50	2	56	90	43	68	138	66	200	1T-1	2.4
65	2 1/2	69	115	46	79	151	66	200	1T-1	3.1
80	3	84	126	46	86	156	66	200	1T-1	3.2
100	4	104	146	52	103	167	66	200	1T-1	4
125	5	130	181	56	118	191	92	300	1T-2	6.7
150	6	153.5	211	56	135	202	92	300	1T-2	8.3
200	8	199	256	60	177	227	97	350	1T-3	12.1

72WG-1T



1T Installation direction

1T LS (standard)	1T LR	1T RS	1T RR
1T XS	1T XR	1T VS	1T VR

Butterfly Valve

TRITEC

TT2

334A

344Q

302A/303Q

304A/304Q

304YA

302Y/304Y

304M (HLV)

507V/508V

DTM

846T/847T/847Q

841T/842T

700Z

700G/704G/705G

72WG/72SG/72LG

731P/732P/732Q/752W

700E/700K/700S

704G/722F/720F

KRV

227P

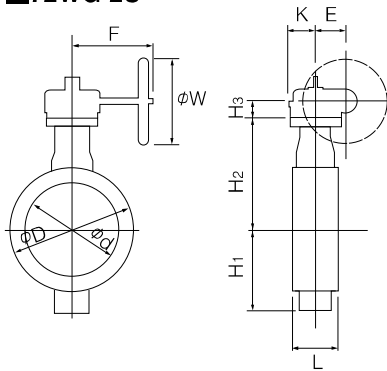
907H/908H (MKT)

903C

Worm gear type 72WG-2U (40mm to 200mm)

Nominal size		Dimension (mm)										Gear type	Approx. Mass (kg)
mm	inch	ϕd	ϕD	L	H ₁	H ₂	H ₃	E	K	F	W		
40	1 1/2	45	80	35	61	132	29.5	36	46	160	100	2U-0	3.8
50	2	56	90	43	68	138	29.5	36	46	160	100	2U-0	4.1
65	2 1/2	69	115	46	79	151	29.5	36	46	160	100	2U-0	4.8
80	3	84	126	46	86	156	29.5	36	46	160	100	2U-1	4.9
100	4	104	146	52	103	167	29.5	36	46	160	100	2U-1	5.7
125	5	130	181	56	118	191	34.5	44	53	173.5	160	2U-2	9.6
150	6	153.5	211	56	135	202	34.5	44	53	173.5	160	2U-2	11.2
200	8	199	256	60	177	227	41.5	67	75	198	200	2U-3	18

72WG-2U



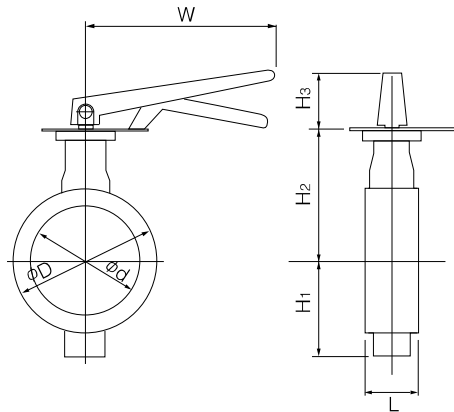
2U Installation direction

2UA (standard)	2UAR	2UB	2UBR

Lock lever type 72SG-1T (50mm to 200mm)

Nominal size		Dimension (mm)							Lever type	Approx. Mass (kg)
mm	inch	ϕd	ϕD	L	H ₁	H ₂	H ₃	W		
50	2	56	90	43	85	138	66	200	1T-1	3.1
65	2 1/2	69	115	46	94	151	66	200	1T-1	4.1
80	3	84	126	46	109	156	66	200	1T-1	4.6
100	4	104	146	52	117	167	66	200	1T-1	5.6
125	5	130	181	56	143	191	92	300	1T-2	9.3
150	6	153	211	56	164	202	92	300	1T-2	12.3
200	8	199.0	256	60	186	227	97	350	1T-3	16.7

72SG-1T



1T Installation direction

1T LS (standard)	1T LR	1T RS	1T RR
1T XS	1T XR	1T VS	1T VR

Butterfly Valve

TRITEC

TT2

334A

344Q

302A/303Q

304A/304Q

304YA

302Y/304Y

304M (HLV)

507V/508V

DTM

846T/847T/847Q

841T/842T

700Z

700G/704G/705G

72WG/72SG/72LG

731P/732P/732Q/752W

700E/700K/700S

704G/722F/720F

KRV

227P

907H/908H (MKT)

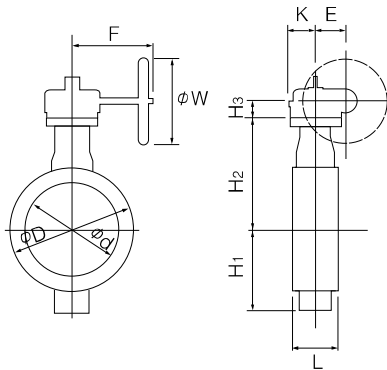
903C

72WG (Wafer) / 72SG (Semi lugged) / 72LG (Lugged)

Worm gear type 72SG-2U (50mm to 600mm)

Nominal size		Dimension (mm)										Gear type	Approx. Mass (kg)
mm	inch	ϕd	ϕD	L	H ₁	H ₂	H ₃	E	K	F	W		
50	2	56	90	43	85	138	29.5	36	46	160	100	2U-0	4.8
65	2 1/2	69	115	46	94	151	29.5	36	46	160	100	2U-0	5.8
80	3	84	126	46	109	156	29.5	36	46	160	100	2U-1	6.3
100	4	104	146	52	117	167	29.5	36	46	160	100	2U-1	7.3
125	5	130	181	56	143	191	34.5	44	53	173.5	160	2U-2	12.2
150	6	153.5	211	56	164	202	34.5	44	53	173.5	160	2U-2	16
200	8	199	256	60	186	227	41.5	67	75	198	200	2U-3	23
250	10	253	322	68	215	280	41.5	67	75	198	200	2U-3	38
300	12	302	367	78	253	312	48	87	90	222.5	200	2U-4	53
350	14	337	410	78	276	348	48	87.5	90	222.5	280	2U-4	63
400	16	394	469	102	338	383	50	90	105	266	280	2U-5	88
450	18	441	525	114	368	413	50	90	105	266	280	2U-5	112
500	20	492	580	127	403	453	50	90	105	266	280	2U-5	143
600	24	584	682	154	458	528	61	113	140	352	400	2U-6	222

72SG-2U



2U Installation direction

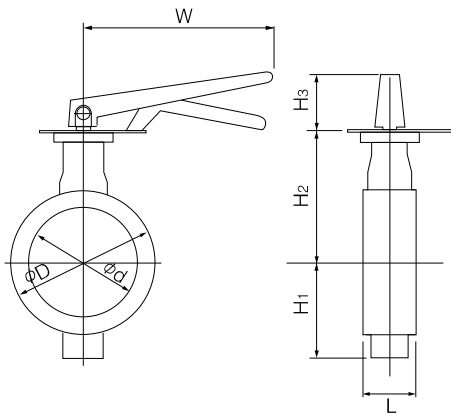
2 U A (standard)	2 U AR	2 U B	2 U BR

72LG (Lugged)

Lock lever type 72LG-1T (50mm to 200mm)

Nominal size		Dimension (mm)							Lever type	Approx. Mass (kg)
mm	inch	ϕd	ϕD	L	H ₁	H ₂	H ₃	W		
50	2	56	90	43	85	138	66	200	1T-1	3.1
65	2 1/2	69	115	46	94	151	66	200	1T-1	4.1
80	3	84	126	46	109	156	66	200	1T-1	5.4
100	4	104	146	52	117	167	66	200	1T-1	8
125	5	130	181	56	143	191	92	300	1T-2	11.9
150	6	153.5	211	56	164	202	92	300	1T-2	15.1
200	8	199	256	60	186	227	97	350	1T-3	22.2

72LG-1T



1T Installation direction

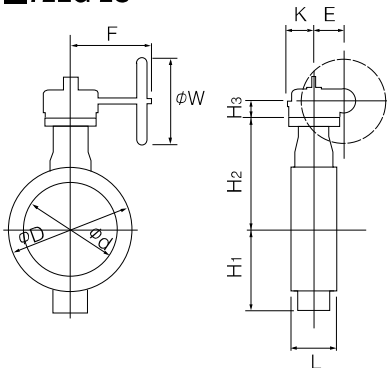
1TLS (standard)	1TLR	1TRS	1TRR
1TXS	1TXR	1TVS	1TVR

Worm gear type 72LG-2U (50mm to 600mm)

Nominal size		Dimension (mm)										Gear type	Approx. Mass (kg)
mm	inch	ϕd	ϕD	L	H ₁	H ₂	H ₃	E	K	F	W		
50	2	56	90	43	68	138	29.5	36	46	160	100	2U-0	4.8
65	2 1/2	69	115	46	79	151	29.5	36	46	160	100	2U-0	5.8
80	3	84	126	46	86	156	29.5	36	46	160	100	2U-1	7.1
100	4	104	146	52	103	167	29.5	36	46	160	100	2U-1	9.7
125	5	130	181	56	118	191	34.5	44	53	173.5	160	2U-2	14.8
150	6	153.5	211	56	135	202	34.5	44	53	173.5	160	2U-2	18.8
200	8	199	256	60	177	227	41.5	67	75	198	200	2U-3	27
250	10	253	322	68	215	280	41.5	67	75	198	200	2U-3	52
300	12	302	367	78	253	312	48	87.5	90	222.5	200	2U-4	76
* 350	14	337	533 520	78	276	348	48	87.5	90	222.5	280	2U-4	86
400	16	394	597	102	338	383	50	90	105	266	280	2U-5	123
* 450	18	441	640 634	114	368	413	50	90	105	266	280	2U-5	148
* 500	20	492	730 696	127	403	453	50	90	105	266	280	2U-5	195
* 600	24	584	840 820	154	458	528	61	113	140	352	400	2U-6	306

* Upper : DIN PN16 Lower : ANSI 150Lb

72LG-2U



2U Installation direction

2 UA (standard)	2 UAR	2 UB	2 UBR

Butterfly Valve

TRITEC

TT2

334A

344Q

302A/303Q

304A/304Q

304YA

302Y/304Y

304M (HLV)

507V/508V

DTM

846T/847T/847Q

841T/842T

700Z

700G/704G/705G

72WG/72SG/72LG

**731P/732P/
732Q/752W**

700E/700K/700S

704G/722F/720F

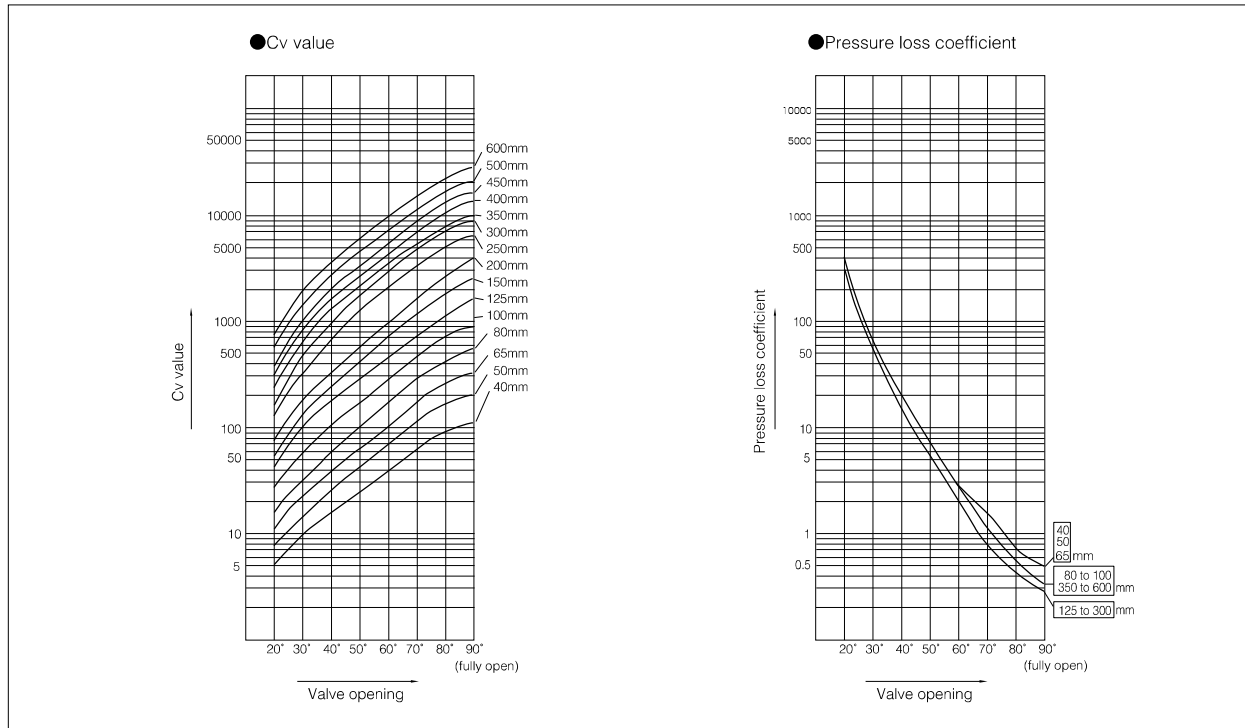
KRV

227P

907H/908H (MKT)

903C

700G/704G/705G Cv value/pressure loss coefficient



Butterfly Valve

TRITEC

TT2

334A

344Q

302A/303Q

304A/304Q

304YA

302Y/304Y

304M (HLV)

507V/508V

DTM

846T/847T/847Q

841T/842T

700Z

700G/704G/705G

72WG/72SG/72LG

731P/732P/732Q/752W

700E/700K/700S

704G/722F/720F

KRV

227P

907H/908H (MKT)

903C

72WG / 72SG / 72LG Cv value

Nominal size		Valve opening							
mm	inch	20°	30°	40°	50°	60°	70°	80°	90°
40	1 1/2	5	9	16	25	39	61	95	121
50	2	8	15	25	40	64	103	160	200
65	2 1/2	12	25	41	64	102	162	260	320
80	3	15	33	57	95	163	271	450	580
100	4	27	58	100	162	269	444	749	880
125	5	45	109	189	295	453	719	1144	1590
150	6	60	148	262	423	685	1147	1897	2800
200	8	67	188	347	576	969	1698	2902	4300
250	10	130	351	675	1225	2125	3375	5091	6200
300	12	194	487	972	1764	3011	4966	7412	8900
350	14	232	662	1350	2030	3294	5167	7832	9620
400	16	468	964	1648	2724	4529	6815	10553	12700
450	18	583	1202	2068	3448	5692	8384	13116	15500
500	20	758	1555	2656	4379	7214	10845	17100	19800
600	24	1037	2141	3681	6129	10106	14911	22827	27300

72WG (Wafer) / 72SG (Semi lugged) / 72LG (Lugged)

72WG / 72SG / 72LG Pressure Loss Coefficient

Nominal size		Valve opening							
mm	inch	20°	30°	40°	50°	60°	70°	80°	90°
40	1 1/2	264	72	26	10	4	2	1	0.4
50	2	257	68	25	10	4	2	1	0.4
65	2 1/2	310	75	28	11	4	2	1	0.4
80	3	394	83	27	10	3	1	0.4	0.3
100	4	350	78	26	10	4	1	0.4	0.3
125	5	316	53	18	7	3	1	0.4	0.2
150	6	348	57	18	7	3	1	0.35	0.2
200	8	849	106	31	11	4	1	0.3	0.2
250	10	528	72	20	6	2	1	0.35	0.25
300	12	488	78	20	6	2	1	0.35	0.25
350	14	531	65	16	7	3	1	0.4	0.3
400	16	227	54	18	7	2	1	0.4	0.3
450	18	239	56	19	7	3	1	0.4	0.3
500	20	218	52	18	7	2	1	0.4	0.3
600	24	247	58	20	7	3	1	0.4	0.3

72WG / 72SG / 72LG Applicable Flange Standard

Nominal size		ANSI	BS4504	DIN
mm	inch	150Lb	NP16	NP16
40	1 1/2	○	○	○
50	2	○	○	○
65	2 1/2	○	○	○
80	3	○	○	○
100	4	○	○	○
125	5	○	○	○
150	6	○	○	○
200	8	○	○	○
250	10	○	○	○
300	12	○	○	○
350	14	○	○	○
400	16	○	○	○
450	18	○	○	○
500	20	○	○	○
600	24	○	○	○

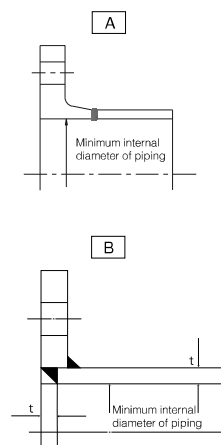
○ : Can be used without flange drilling.

72WG / 72SG / 72LG Applicable Pipe List in Case of **A**

Nominal size		SGP	Sch20	Sch40	Sch10S	Sch20S	Minimum internal diameters of piping (mm)
mm	inch						
40	1 1/2	○	—	○	○	○	26
50	2	○	○	○	○	○	31
65	2 1/2	○	○	○	○	○	48
80	3	○	○	○	○	○	67
100	4	○	○	○	○	○	87
125	5	○	○	○	○	○	115
150	6	○	○	○	○	○	140
200	8	○	○	○	○	○	188
250	10	○	○	○	○	○	243
300	12	○	○	○	○	○	292
350	14	○	○	○	—	—	324
400	16	○	○	○	—	—	375
450	18	○	○	○	—	—	421
500	20	○	○	○	—	—	471
600	24	—	○	○	—	—	557

72WG / 72SG / 72LG Applicable Pipe List in Case of **B**

Nominal size		SGP	STPY	Sch20	Sch40	Sch10S	Sch20S
mm	inch						
40	1 1/2	○	—	—	○	○	○
50	2	○	—	○	○	○	○
65	2 1/2	○	—	○	○	○	○
80	3	○	—	○	○	○	○
100	4	○	—	○	○	○	○
125	5	○	—	○	○	○	○
150	6	○	—	○	○	○	○
200	8	○	—	○	○	○	○
250	10	○	—	○	○	○	○
300	12	○	—	○	○	○	○
350	14	○	○	○	○	—	—
400	16	○	○	○	○	—	—
450	18	○	○	○	○	—	—
500	20	○	○	○	○	—	—
600	24	—	○	○	○	—	—



Butterfly Valve
TRITEC
TT2
334A
344Q
302A/303Q
304A/304Q
304YA
302Y/304Y
304M (HLV)
507V/508V
DTM
846T/847T/847Q
841T/842T
700Z
700G/704G/705G
72WG/72SG/72LG
731P/732P/732Q/752W
700E/700K/700S
704G/722F/720F
KRV
227P
907H/908H (MKT)
903C

Remark 1: The symbols above mean the following.

○: Piping possible —: Not standardized

Remark 2: Butterfly valves are inserted into a pipe that was fitted with the disc when fully open.

In cases where you are using a pipe or flange that is less than the minimum inner pipe diameter, use is still possible if means are taken such as inserting a spacer between the valve and flange. For details, please consult us.

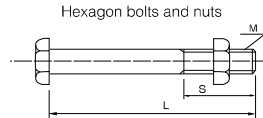
72WG Piping Bolts and Nuts Sizes

■ **For Hexagon Bolts and Nuts**

Nominal size		DIN PN16	GB PN16	BS PN16	ANSI 150Lb
mm	inch	Hex. bolt & nuts	Hex. bolt & nuts	Hex. bolt & nuts	Hex. bolt & nuts
40	1 1/2	4-M16× 90×30	4-M16× 90×30	4-M16× 90×30	4-1/2-13UNC× 90×38
50	2	4-M16×105×30	4-M16×105×30	4-M16×105×30	4-5/8-11UNC×105×38
65	2 1/2	4-M16×105×30	4-M16×105×30	4-M16×105×30	4-5/8-11UNC×110×38
80	3	8-M16×105×30	8-M16×105×30	8-M16×105×30	4-5/8-11UNC×120×38
100	4	8-M16×115×30	8-M16×115×30	8-M16×115×30	8-5/8-11UNC×125×38
125	5	8-M16×120×35	8-M16×120×35	8-M16×120×35	8-3/4-10UNC×130×45
150	6	8-M20×130×40	8-M20×130×40	8-M20×130×40	8-3/4-10UNC×135×45
200	8	12-M20×140×40	12-M20×140×40	12-M20×140×40	8-3/4-10UNC×145×50

Example

Hexagon bolts : 12 - M22 × 60 × 50
 | | | |
 N M L S



72SG/72LG Piping Bolts and Nuts Sizes

■ For Hexagon Bolts and Nuts (Flange Bolt Hole: Drilled Holes)

Size		DIN PN16	GB PN16	BS PN16	ANSI 150Lb
mm	inch	Hex. bolt & nuts	Hex. bolt & nuts	Hex. bolt & nuts	Hex. bolt & nuts
50	2	4-M16×105×30	4-M16×105×30	4-M16×105×30	4-5/8-11UNC×105×38
65	2 1/2	4-M16×105×30	4-M16×105×30	4-M16×105×30	4-5/8-11UNC×110×38
80	3	8-M16×105×30	8-M16×105×30	8-M16×105×30	4-5/8-11UNC×120×38
100	4	8-M16×115×35	8-M16×115×35	8-M16×115×35	8-5/8-11UNC×125×38
125	5	8-M16×120×35	8-M16×120×35	8-M16×120×35	8-3/4-10UNC×130×45
150	6	8-M20×130×40	8-M20×130×40	8-M20×130×40	8-3/4-10UNC×135×45
200	8	12-M20×140×40	12-M20×140×40	12-M20×140×40	8-3/4-10UNC×145×50
250	10	12-M20×160×45	12-M20×160×45	12-M20×160×45	12-7/8- 9UNC×155×50
300	12	12-M20×180×45	12-M20×180×45	12-M20×180×45	12-7/8- 9UNC×170×50
350	14	16-M20×180×45	16-M20×180×45	16-M20×180×45	12-1- 8UNC×180×55
400	16	16-M24×210×50	16-M24×210×50	16-M24×210×50	16-1- 8UNC×205×55
450	18	20-M24×230×55	20-M24×230×55	20-M24×230×55	16-1 1/8-8UN×225×60
500	20	20-M24×250×55	20-M24×250×55	20-M24×250×55	20-1 1/8-8UN×245×60
600	24	20-M27×290×60	20-M27×290×60	20-M27×290×60	20-1 1/4-8UN×290×65

■ For Hexagon Bolts and Nuts (Flange Bolt Hole: Tapped Holes)

Size		DIN PN16	GB PN16	BS PN16	ANSI 150Lb
mm	inch	Hex. bolt	Hex. bolt	Hex. bolt	Hex. bolt
50	2	8-M16×40×25	8-M16×40×25	8-M16×40×25	8-5/8-11UNC×35×20
65	2 1/2	8-M16×40×25	8-M16×40×25	8-M16×40×25	8-5/8-11UNC×40×25
80	3	16-M16×40×25	16-M16×40×25	16-M16×40×25	8-5/8-11UNC×40×25
100	4	16-M16×40×25	16-M16×40×25	16-M16×40×25	16-5/8-11UNC×40×25
125	5	16-M16×40×25	16-M16×40×25	16-M16×40×25	16-3/4-10UNC×45×30
150	6	16-M20×45×25	16-M20×45×25	16-M20×45×25	16-3/4-10UNC×45×30
200	8	24-M20×50×30	24-M20×50×30	24-M20×50×30	16-3/4-10UNC×50×30
250	10	24-M20×55×35	24-M20×55×35	24-M20×55×35	24-7/8- 9UNC×60×35
300	12	24-M20×60×40	24-M20×60×40	24-M20×60×40	24-7/8- 9UNC×65×35
350	14	32-M20×60×40	32-M20×60×40	32-M20×60×40	24-1- 8UNC×65×35
400	16	32-M24×65×45	32-M24×65×45	32-M24×65×45	32-1- 8UNC×70×40
450	18	40-M24×70×45	40-M24×70×45	40-M24×70×45	32-1 1/8-8UN×75×45
500	20	40-M24×75×50	40-M24×75×50	40-M24×75×50	40-1 1/8-8UN×75×45
600	24	40-M27×85×55	40-M27×85×55	40-M27×85×55	40-1 1/4-8UN×85×50

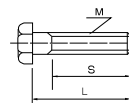
Remarks:
 Bolt/Nut material: SS400/SS400, SUS304/SUS304
 The dimensions in parenthesis show ANSI125Lb. (for 65 mm and 80 mm)
 Heavy nut shall be used for ANSI125Lb/150Lb hexagon nuts.
 A unified screw should have 8 threads per inch if its nominal diameter exceeds 1 inch.

Example

Setting bolts: 4 - M30 × 95 × 65
 (Hexagon bolts)

Quantity Nominal size (M) Length of bolt (L) Effective screw length (S)

Setting bolts (Hexagon bolts)



Butterfly Valve

TRITEC

TT2

334A

344Q

302A/303Q

304A/304Q

304YA

302Y/304Y

304M (HLV)

507Y/508V

DTM

846T/847T/847Q

841T/842T

700Z

700G/704G/705G

72WG/72SG/72LG

731P/732P/732Q/752W

700E/700K/700S

704G/722F/720F

KRV

227P

907H/908H (MKT)

903C